

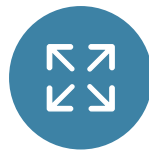


Empowering Your Business is Endless

We serve as your all-encompassing real estate marketing partner, providing a holistic solution for landlords and agents across the Real Estate industry, regardless of size or location.

RMH is a subscription-based approach granting you full autonomy throughout the entire process, ensuring complete control from initiation to completion.

Bid farewell to the frustration of waiting for tenancy updates and crucial dates from external sources. Your RMH delivers instant control. Keep your asset status and sales initiatives up to date in real-time, ensuring optimal efficiency and maximizing occupancy rates and ROI's.



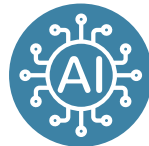
Revolutionary Real Estate Marketing Hub, centralised asset data with 2D/3D display.



Fully searchable unit data... Letting status, financials, dates, sizes and more.



Control your data with full editing functionality, unit sizes, rates and dates, easy data & photo updates.



AI Marketing Assistance to help you create the perfect sales portfolio.



Generate marketing PDFs on the fly and with up to date information and financials.



Real Estate Marketing Hub (RMH) - Key Features

- ✓ Central RMH for Unlimited Retail Centres and Outlets Globally.
- ✓ Easily search for vacant units, unit sizes, rent, lease expiry, rent review, break dates in real-time.
- ✓ Transform your floor plans into dynamic, interactive 2D/3D Layouts.
- ✓ Granular security levels for tailored data visibility and editing rights with unlimited multi-user capacity.
- ✓ Create personalized marketing PDFs and Brochures with AI Marketing Assistance generated instantly for B2B Collaboration.
- ✓ Experience full editing capabilities, allowing updates to unit data, unit photos, and leasing financials, for criteria profiling.
- ✓ Access and Add Photographs and Videos of your shopping centres and retail units effortlessly.
- ✓ Gain insights into retail centre data such as footfall, parking and geographic and demographic information.
- ✓ Benefit from free training, whether remote or in-house.
- ✓ Receive free technical support and client liaison.

The package rate is £85 per unit, with annual subscription fees applicable. Multi-site discounts are available.

Virtual Package

3D Model proposed developments to deliver Virtual Tours & CGIs
Addon Packages Available

Media Package

Interactive 360 Virtual Tours
 Retail Centre Photo Gallery
 Retail Centre Marketing Film
Addon Package Available
One Off Fee

Data Input Support

Ad hoc service to update retail asset information as required
Content Support £75 per Hour

New Developments

**All new builds and cross leasing industries such as commercial and industrial can be included
 T&Cs and costs will apply but please talk to us to discuss your requirements**